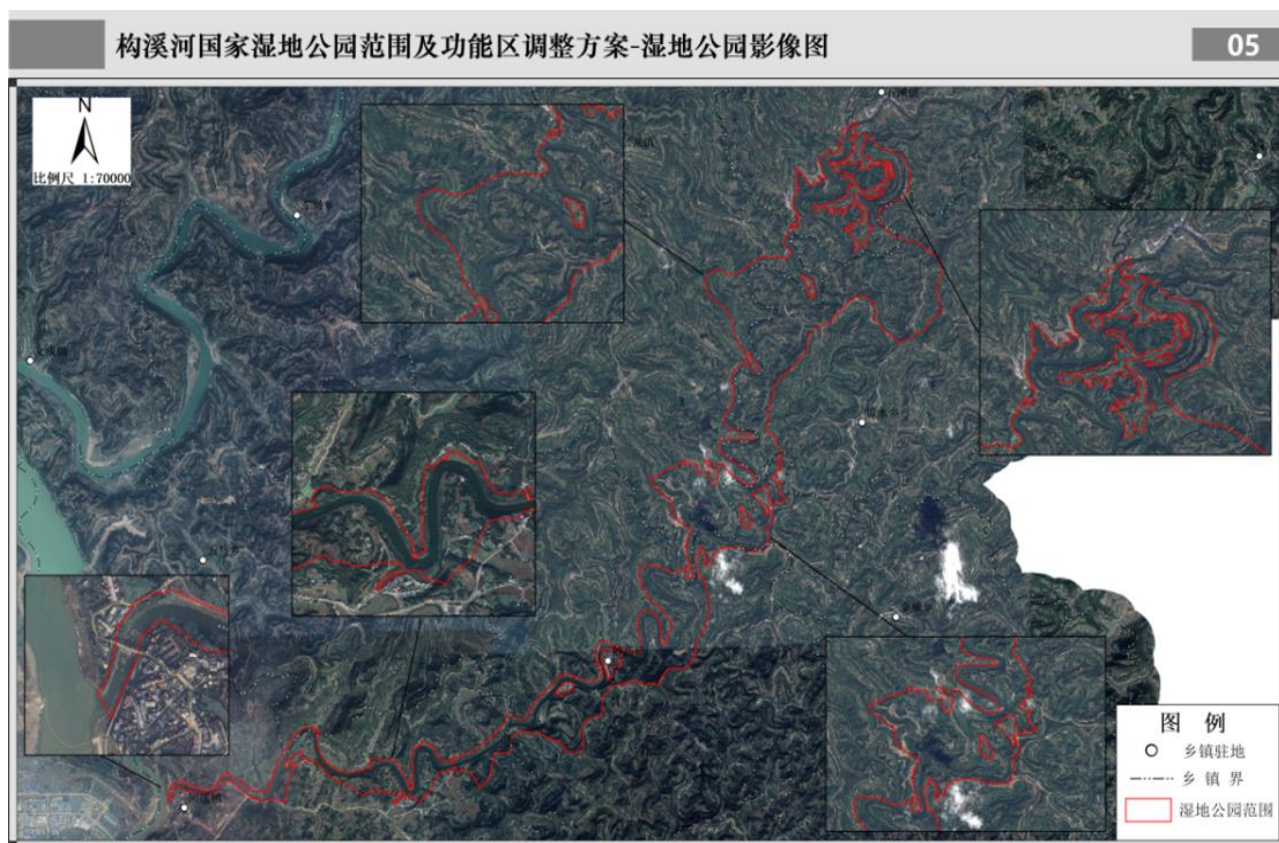


# 四川构溪河国家湿地公园

## 一、四川构溪河国家湿地公园所在地理位置

阆中构溪河国家湿地公园位于四川省阆中市的中东部，地理坐标介于东经  $106^{\circ} 3' 3.8''$  -  $106^{\circ} 13' 56''$ ，北纬  $31^{\circ} 32' 19.3''$  -  $31^{\circ} 40' 16''$  之间，调整后湿地公园总面积为 2668.52 公顷，最低海拔 340 米，位于构溪河与嘉陵江交汇处，最高海拔 680 米，位于湿地公园北部的薛家沟附近。

## 二、四川构溪河国家湿地公园范围调整后示意图



### 三、四川构溪河国家湿地公园调整后范围拐点坐标

拐点编号	经度	纬度	拐点编号	经度	纬度
1	106°3' 7.553" E	31°32' 22.827" N	164	106°12' 49.524" E	31°39' 46.184" N
2	106°3' 5.814" E	31°32' 26.261" N	165	106°12' 49.262" E	31°39' 39.916" N
3	106°3' 8.434" E	31°32' 33.496" N	166	106°12' 52.865" E	31°39' 40.552" N
4	106°3' 10.699" E	31°32' 36.516" N	167	106°12' 58.711" E	31°39' 43.778" N
5	106°5' 13.804" E	31°33' 11.124" N	185	106°12' 24.007" E	31°39' 12.417" N
6	106°5' 11.218" E	31°33' 9.228" N	186	106°12' 23.652" E	31°39' 9.809" N
7	106°5' 15.885" E	31°32' 54.224" N	187	106°12' 27.044" E	31°39' 8.162" N
8	106°6' 28.689" E	31°32' 29.922" N	199	106°12' 44.290" E	31°39' 0.027" N
9	106°6' 28.475" E	31°32' 31.489" N	200	106°12' 40.501" E	31°39' 2.090" N
10	106°6' 30.793" E	31°32' 33.346" N	201	106°12' 42.132" E	31°38' 57.746" N
11	106°6' 39.484" E	31°33' 3.633" N	210	106°12' 56.392" E	31°38' 59.495" N
12	106°6' 41.983" E	31°33' 3.305" N	211	106°12' 47.795" E	31°39' 16.343" N
13	106°6' 46.098" E	31°33' 0.120" N	212	106°12' 45.617" E	31°39' 18.769" N
14	106°6' 48.581" E	31°33' 0.808" N	213	106°12' 45.879" E	31°39' 21.945" N
15	106°7' 26.449" E	31°32' 58.803" N	220	106°13' 1.233" E	31°39' 22.692" N
16	106°7' 48.770" E	31°33' 16.449" N	221	106°13' 12.688" E	31°39' 27.908" N
17	106°7' 49.852" E	31°33' 21.993" N	222	106°13' 15.653" E	31°39' 34.895" N
18	106°9' 4.186" E	31°34' 4.896" N	231	106°12' 52.572" E	31°40' 4.695" N
19	106°9' 9.396" E	31°34' 11.655" N	232	106°13' 2.423" E	31°39' 59.202" N
20	106°10' 4.031" E	31°34' 9.636" N	240	106°13' 35.342" E	31°38' 48.458" N
21	106°10' 5.226" E	31°34' 13.831" N	241	106°13' 57.282" E	31°38' 35.319" N
22	106°10' 9.824" E	31°34' 22.963" N	242	106°13' 52.828" E	31°38' 16.616" N
23	106°10' 19.994" E	31°34' 57.539" N	250	106°11' 35.543" E	31°37' 8.553" N
24	106°10' 27.104" E	31°34' 56.891" N	251	106°11' 31.655" E	31°36' 44.222" N
25	106°10' 24.301" E	31°35' 0.123" N	252	106°11' 42.374" E	31°36' 21.600" N
26	106°10' 20.603" E	31°36' 17.969" N	259	106°11' 29.005" E	31°35' 38.160" N
27	106°10' 24.479" E	31°36' 15.479" N	260	106°11' 29.297" E	31°35' 46.004" N
28	106°10' 30.129" E	31°36' 15.635" N	261	106°11' 27.761" E	31°35' 29.622" N
29	106°10' 30.718" E	31°36' 9.708" N	262	106°11' 28.714" E	31°35' 17.118" N
30	106°11' 8.886" E	31°36' 2.801" N	270	106°10' 40.360" E	31°34' 42.504" N
31	106°11' 19.455" E	31°36' 1.496" N	271	106°10' 39.152" E	31°34' 33.716" N
32	106°10' 52.481" E	31°36' 22.346" N	272	106°10' 40.745" E	31°34' 28.520" N
33	106°10' 49.859" E	31°36' 30.215" N	273	106°10' 36.062" E	31°34' 20.165" N
34	106°11' 18.264" E	31°36' 31.967" N	274	106°10' 29.245" E	31°34' 10.593" N
35	106°11' 19.770" E	31°37' 19.420" N	282	106°8' 46.353" E	31°32' 54.447" N
36	106°11' 14.206" E	31°37' 31.772" N	283	106°8' 24.324" E	31°33' 4.550" N
37	106°10' 53.822" E	31°38' 6.179" N	284	106°8' 1.445" E	31°33' 10.797" N
38	106°10' 42.461" E	31°38' 13.546" N	285	106°7' 53.154" E	31°32' 56.112" N
39	106°10' 39.908" E	31°38' 25.489" N	286	106°7' 39.952" E	31°32' 54.196" N

拐点编号	经度	纬度	拐点编号	经度	纬度
40	106°11'45.584" E	31°38'48.548" N	293	106°6'52.356" E	31°32'41.792" N
41	106°11'48.976" E	31°38'56.636" N	294	106°6'38.202" E	31°32'21.923" N
42	106°11'53.450" E	31°39'2.658" N	295	106°6'29.498" E	31°32'26.208" N
43	106°12'15.571" E	31°39'34.596" N	302	106°5'49.258" E	31°32'26.811" N
44	106°12'21.486" E	31°39'33.433" N	303	106°5'10.716" E	31°32'50.901" N
45	106°12'15.608" E	31°39'44.946" N	304	106°5'3.492" E	31°32'50.736" N
46	106°12'24.409" E	31°39'53.366" N	305	106°4'59.144" E	31°32'51.241" N
47	106°12'47.413" E	31°40'13.235" N	312	106°4'52.764" E	31°32'50.867" N
48	106°12'31.100" E	31°39'43.897" N	321	106°3'40.840" E	31°32'28.114" N
49	106°12'28.452" E	31°39'42.294" N	322	106°3'27.582" E	31°32'29.949" N
50	106°12'31.945" E	31°39'42.158" N	323	106°3'21.115" E	31°32'30.874" N
51	106°12'34.941" E	31°39'44.562" N	324	106°3'15.232" E	31°32'34.681" N
52	106°12'41.002" E	31°39'45.432" N	325	106°3'11.673" E	31°32'31.247" N
53	106°12'44.260" E	31°39'44.533" N			