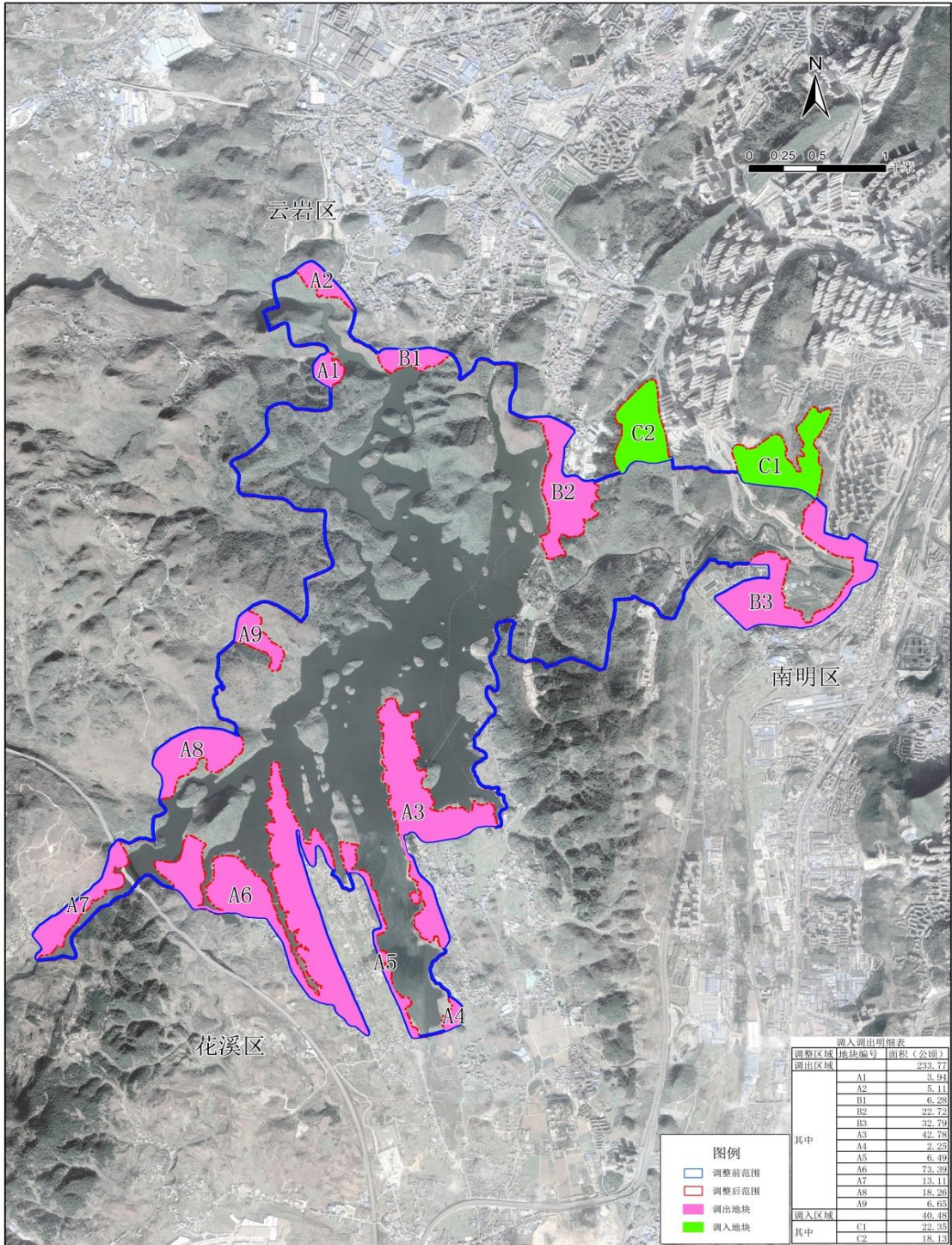


# 贵州贵阳阿哈湖国家湿地公园

## 一、 贵州贵阳阿哈湖国家湿地公园所在地理位置

贵州贵阳阿哈湖国家湿地公园位于贵阳市中心城区西南部，规划总面积 1024.71 公顷，范围包括阿哈水库主体、游鱼河下游及河口段、金钟河下游及河口段、白岩河下游及河口段、烂泥沟河河口段、蔡冲河河口段、阿哈水库面山水源涵养区、水库坝下小车河段，涉及贵阳市的花溪区、南明区、云岩区、观山湖区 4 个区。地理坐标为：东经  $106^{\circ} 37' 03''$  — $106^{\circ} 40' 39''$ ，北纬  $26^{\circ} 30' 38''$  — $26^{\circ} 33' 52''$ 。

## 二、 贵州贵阳阿哈湖国家湿地公园范围调整示意图



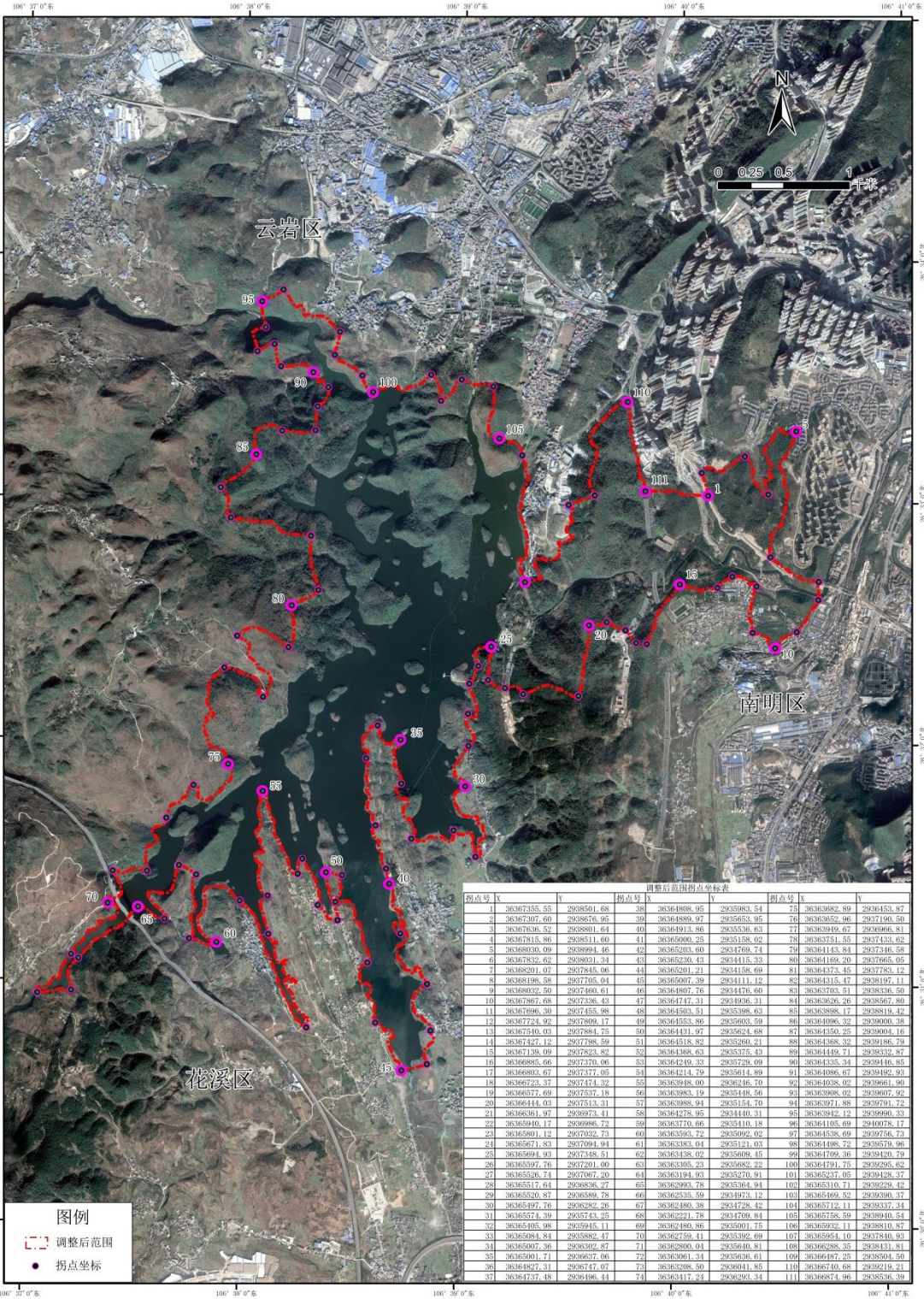
### 三、 贵州贵阳阿哈湖国家湿地公园调整后范围拐点坐标

阿哈湖国家湿地公园调整后范围边界地理坐标

点位	X	Y	点位	X	Y
1	36367355.55	2938501.68	61	36363383.04	2935121.03
2	36367307.60	2938676.95	62	36363438.02	2935609.45
3	36367636.52	2938801.64	63	36363305.23	2935682.22
4	36367815.86	2938511.60	64	36363194.93	2935270.91
5	36368030.09	2938994.46	65	36362993.78	2935364.94
6	36367832.62	2938031.34	66	36362535.59	2934973.12
7	36368201.07	2937845.06	67	36362480.38	2934728.42
8	36368198.58	2937705.04	68	36362221.78	2934709.84
9	36368032.50	2937460.61	69	36362480.86	2935001.75
10	36367867.68	2937336.43	70	36362759.41	2935392.69
11	36367696.30	2937455.98	71	36362800.04	2935640.81
12	36367724.92	2937809.17	72	36363061.34	2935636.61
13	36367540.03	2937884.75	73	36363208.50	2936041.85
14	36367427.12	2937798.59	74	36363417.24	2936293.34
15	36367139.09	2937823.82	75	36363682.89	2936453.87
16	36366885.66	2937370.06	76	36363652.96	2937190.50
17	36366803.67	2937377.05	77	36363949.67	2936966.81
18	36366723.37	2937474.32	78	36363751.55	2937433.62
19	36366577.69	2937537.18	79	36364143.84	2937346.58
20	36366444.03	2937513.31	80	36364169.20	2937665.05
21	36366361.97	2936973.41	81	36364373.45	2937783.12
22	36365940.17	2936986.72	82	36364315.47	2938197.11
23	36365801.12	2937032.73	83	36363703.51	2938336.50
24	36365671.83	2937094.94	84	36363626.26	2938567.80
25	36365694.93	2937348.51	85	36363898.17	2938819.42
26	36365597.76	2937201.00	86	36364096.32	2939000.38
27	36365526.74	2937067.20	87	36364350.25	2939004.16
28	36365517.64	2936836.27	88	36364368.32	2939186.79
29	36365520.87	2936589.78	89	36364449.71	2939332.87
30	36365497.76	2936282.26	90	36364335.34	2939446.85
31	36365574.39	2935743.25	91	36364086.67	2939492.93

32	36365405.98	2935945.11	92	36364038.02	2939661.90
33	36365084.84	2935882.47	93	36363908.02	2939607.92
34	36365007.36	2936302.87	94	36363971.88	2939791.72
35	36365001.71	2936637.06	96	36363942.12	2939990.33
36	36364827.31	2936747.07	96	36364105.69	2940078.17
37	36364737.48	2936496.44	97	36364538.69	2939756.73
38	36364808.95	2935983.54	98	36364498.72	2939579.96
39	36364889.97	2935653.95	99	36364709.36	2939420.79
40	36364913.86	2935536.63	100	36364791.75	2939295.62
41	36365000.25	2935158.02	101	36365237.05	2939428.37
42	36365203.60	2934769.74	102	36365310.71	2939229.42
43	36365230.43	2934415.33	103	36365469.52	2939390.37
44	36365201.21	2934158.69	104	36365712.11	2939337.34
45	36365007.39	2934111.12	105	36365758.59	2938940.54
46	36364807.76	2934476.60	106	36365932.11	2938810.87
47	36364747.31	2934936.31	107	36365954.10	2937840.93
48	36364503.51	2935398.63	108	36366288.35	2938431.81
49	36364553.86	2935603.59	109	36366487.25	2938504.50
50	36364431.97	2935624.68	110	36366740.68	2939219.21
51	36364518.82	2935260.21	111	36366874.96	2938536.39
52	36364368.63	2935375.43			
53	36364249.33	2935729.09			
54	36364214.79	2935614.89			
55	36363948.00	2936246.70			
56	36363983.19	2935448.56			
57	36363988.94	2935154.70			
58	36364278.95	2934440.31			
59	36363770.66	2935410.18			
60	36363593.72	2935092.02			





调整后范围拐点坐标表

拐点号	X	Y	拐点号	X	Y	拐点号	X	Y
1	36367355.55	2938501.68	38	36364808.95	2935983.54	75	36363982.89	2936453.87
2	36367307.60	2938876.95	39	36364889.97	2935853.95	76	36363955.96	2937190.50
3	36367636.52	2938801.64	40	36364913.86	2935558.63	77	36363949.67	2939069.81
4	36367815.86	2938511.60	41	36365000.25	2935138.02	78	36363751.55	2937435.62
5	36368030.09	2938994.46	42	36365203.60	2934769.74	79	36364143.84	2937346.58
6	36367837.62	2938801.34	43	36365290.43	2934415.33	80	36364499.20	2937665.05
7	36368201.07	2937845.06	44	36365291.21	2934158.69	81	36364773.45	2937785.12
8	36368198.58	2937705.04	45	36365007.39	2934111.12	82	36364315.47	2938197.11
9	36368032.50	2937460.61	46	36364807.76	2934176.60	83	36363703.51	2938336.50
10	36367867.68	2937426.43	47	36364447.31	2934496.31	84	36363626.26	2938567.80
11	36367696.39	2937455.96	48	36364503.51	2935398.63	85	36363628.17	2938918.42
12	36367724.92	2937809.17	49	36364553.86	2935603.59	86	36364096.32	2939000.38
13	36367540.03	2937884.75	50	36364431.97	2935624.68	87	36364350.25	2939004.16
14	36367447.12	2937198.59	51	36364518.82	2935280.21	88	36364038.02	2939188.79
15	36367139.09	2937825.82	52	36364368.63	2935375.63	89	36364149.71	2939335.87
16	36366885.66	2937370.06	53	36364249.33	2935729.09	90	36364335.34	2939446.85
17	36366803.67	2937377.05	54	36364214.79	2935614.89	91	36364086.67	2939492.93
18	36366733.37	2937474.32	55	36363948.00	2935626.70	92	36364038.02	2939861.90
19	36366571.69	2937531.16	56	36363883.19	2935448.66	93	36363988.02	2939907.92
20	36366444.03	2937513.31	57	36363988.94	2935154.70	94	36363971.88	2939791.72
21	36366361.97	2936973.41	58	36364278.95	2934440.31	95	36363942.12	2939990.33
22	36365940.17	2936986.72	59	36363770.66	2933410.18	96	36364105.69	2940078.17
23	36365801.12	2937032.73	60	36363363.72	2933092.02	97	36364528.69	2939766.73
24	36365671.83	2937094.94	61	36363383.04	2935121.03	98	36364498.72	2939579.96
25	36365694.93	2937348.51	62	36363438.07	2935609.45	99	36364709.36	2939420.79
26	36365597.76	2937201.00	63	36363385.23	2935682.22	100	36364701.75	2939295.62
27	36365526.74	2937067.20	64	36363194.93	2935270.91	101	36365277.05	2939428.37
28	36365517.64	2936836.27	65	36362993.78	2935384.94	102	3636510.71	2939229.42
29	36365520.87	2936589.78	66	36362535.59	2934973.12	103	36365469.52	2939396.37
30	36365497.76	2936282.26	67	36362480.38	2934758.42	104	36365716.11	2939337.34
31	36365574.39	2935743.25	68	36362221.78	2934709.84	105	36365758.59	2939440.54
32	36365405.98	2935945.11	69	36362480.86	2935001.75	106	36365932.11	2939810.87
33	36365084.84	2935882.47	70	36362759.41	2935392.69	107	36365954.10	2937840.93
34	36365007.36	2936302.87	71	36362606.04	2935560.81	108	36366288.25	2938433.81
35	36365001.71	2936937.06	72	36363061.34	2936336.61	109	36366487.25	2938504.59
36	36364827.31	2936747.07	73	36363208.50	2936641.85	110	36366740.68	2939219.21
37	36364737.48	2936496.44	74	36363417.24	2936293.34	111	36366874.96	2938536.39