

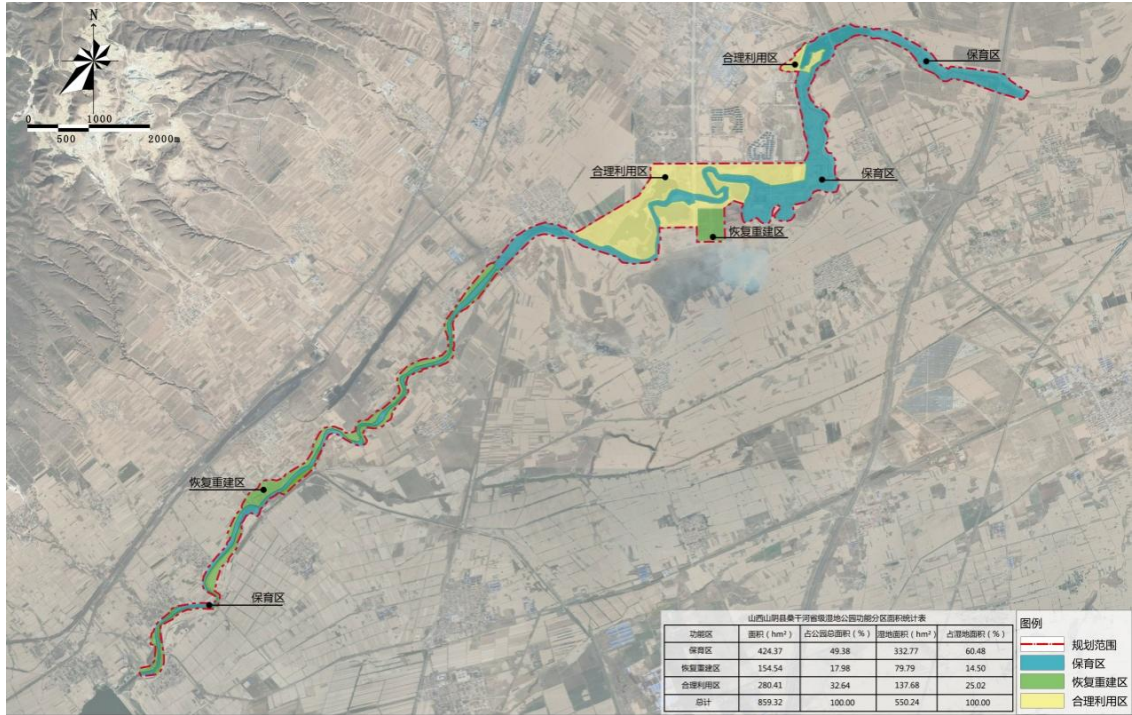
山西山阴桑干河国家湿地公园

一、山西山阴桑干河国家湿地公园所在地理位置

桑干河是山西省仅次于汾河的第二大河流，也是永定河上源。山西山阴桑干河国家湿地公园地处桑干河上游，对于山西乃至首都北京水生态安全意义重大，生态区位不可替代。

山西山阴桑干河国家湿地公园位于山西省朔州市山阴县的县城南部，范围包括山阴县境内桑干河干流河道及两侧湿地和林地。湿地公园西南至山阴县县界，东北至二广高速大桥东侧拦水坝，北侧以河堤路及顺通街为界，南侧以桑干河河岸为界。地理坐标位于东经 $112^{\circ} 43' 47'' \sim 112^{\circ} 54' 51''$ ，北纬 $39^{\circ} 23' 48'' \sim 39^{\circ} 30' 06''$ 之间。

二、山西山阴桑干河国家湿地公园示意图



三、山西山阴桑干河国家湿地公园拐点坐标

序号	东经	北纬	序号	东经	北纬
1	112°54'53"	39°29'27"	107	112°45'30"	39°25'33"
2	112°54'39"	39°29'34"	108	112°45'34"	39°25'34"
3	112°54'36"	39°29'37"	109	112°45'37"	39°25'32"
4	112°54'16"	39°29'39"	110	112°45'59"	39°25'48"
5	112°53'55"	39°29'41"	111	112°46'0"	39°25'50"
6	112°53'54"	39°29'40"	112	112°46'10"	39°26'8"
7	112°53'47"	39°29'43"	113	112°46'13"	39°26'8"
8	112°53'40"	39°29'49"	114	112°46'31"	39°26'1"
9	112°53'26"	39°29'56"	115	112°46'36"	39°26'2"
10	112°53'15"	39°30'1"	116	112°46'38"	39°26'4"
11	112°53'7"	39°30'3"	117	112°46'35"	39°26'8"
12	112°52'59"	39°30'3"	118	112°46'38"	39°26'11"
13	112°52'58"	39°30'3"	119	112°46'45"	39°26'11"
14	112°52'54"	39°30'4"	120	112°46'51"	39°26'13"
15	112°52'45"	39°30'5"	121	112°46'57"	39°26'18"
16	112°52'39"	39°30'6"	122	112°46'58"	39°26'21"
17	112°52'16"	39°29'59"	123	112°47'8"	39°26'30"
18	112°52'12"	39°29'56"	124	112°47'9"	39°26'32"
19	112°52'6"	39°29'55"	125	112°47'7"	39°26'37"
20	112°52'2"	39°29'51"	126	112°47'9"	39°26'41"
21	112°51'59"	39°29'49"	127	112°47'20"	39°26'45"
22	112°51'58"	39°29'47"	128	112°47'26"	39°26'47"
23	112°51'48"	39°29'42"	129	112°47'37"	39°26'48"
24	112°51'48"	39°29'40"	130	112°47'42"	39°26'52"
25	112°51'48"	39°29'39"	131	112°47'44"	39°26'55"
26	112°51'55"	39°29'38"	132	112°47'42"	39°26'57"
27	112°52'2"	39°29'39"	133	112°47'43"	39°27'12"
28	112°52'0"	39°29'33"	134	112°47'43"	39°27'15"
29	112°51'59"	39°29'27"	135	112°47'49"	39°27'19"
30	112°52'3"	39°29'16"	136	112°47'58"	39°27'24"
31	112°52'6"	39°29'1"	137	112°48'4"	39°27'29"

序号	东经	北纬	序号	东经	北纬
32	112°52'8"	39°28'57"	138	112°48'23"	39°27'47"
33	112°52'9"	39°28'50"	139	112°48'45"	39°28'3"
34	112°52'8"	39°28'48"	140	112°48'56"	39°28'4"
35	112°52'7"	39°28'45"	141	112°49'2"	39°28'2"
36	112°50'11"	39°28'45"	142	112°49'6"	39°28'2"
37	112°50'11"	39°28'37"	143	112°49'14"	39°28'0"
38	112°50'1"	39°28'27"	144	112°49'20"	39°27'57"
39	112°49'15"	39°28'5"	145	112°49'45"	39°27'51"
40	112°49'11"	39°28'5"	146	112°49'49"	39°27'48"
41	112°49'1"	39°28'10"	147	112°49'59"	39°27'47"
42	112°48'51"	39°28'11"	148	112°50'15"	39°27'49"
43	112°48'31"	39°28'4"	149	112°50'16"	39°27'56"
44	112°48'14"	39°27'47"	150	112°50'18"	39°27'59"
45	112°47'36"	39°27'12"	151	112°50'17"	39°28'8"
46	112°47'37"	39°26'56"	152	112°50'44"	39°28'8"
47	112°47'19"	39°26'51"	153	112°50'44"	39°28'0"
48	112°47'2"	39°26'42"	154	112°51'6"	39°28'0"
49	112°47'2"	39°26'32"	155	112°51'6"	39°28'19"
50	112°46'49"	39°26'22"	156	112°51'13"	39°28'24"
51	112°46'37"	39°26'16"	157	112°51'21"	39°28'22"
52	112°46'30"	39°26'14"	158	112°51'19"	39°28'20"
53	112°46'30"	39°26'9"	159	112°51'19"	39°28'13"
54	112°46'22"	39°26'8"	160	112°51'21"	39°28'10"
55	112°46'7"	39°26'11"	161	112°51'24"	39°28'11"
56	112°45'58"	39°26'1"	162	112°51'31"	39°28'13"
57	112°45'52"	39°25'51"	163	112°51'32"	39°28'11"
58	112°45'39"	39°25'45"	164	112°51'37"	39°28'10"
59	112°45'31"	39°25'41"	165	112°51'42"	39°28'14"
60	112°45'23"	39°25'41"	166	112°51'42"	39°28'18"
61	112°45'17"	39°25'37"	167	112°51'44"	39°28'21"
62	112°45'12"	39°25'35"	168	112°51'48"	39°28'19"
63	112°45'4"	39°25'25"	169	112°51'43"	39°28'15"
64	112°44'57"	39°25'17"	170	112°51'46"	39°28'11"

序号	东经	北纬	序号	东经	北纬
65	112°44'54"	39°25'8"	171	112°51'56"	39°28'12"
66	112°44'53"	39°25'3"	172	112°51'58"	39°28'16"
67	112°44'41"	39°24'52"	173	112°51'58"	39°28'20"
68	112°44'37"	39°24'46"	174	112°52'7"	39°28'23"
69	112°44'36"	39°24'39"	175	112°52'10"	39°28'24"
70	112°44'40"	39°24'35"	176	112°52'13"	39°28'29"
71	112°44'44"	39°24'34"	177	112°52'18"	39°28'29"
72	112°44'44"	39°24'30"	178	112°52'30"	39°28'28"
73	112°44'24"	39°24'28"	179	112°52'31"	39°28'35"
74	112°44'10"	39°24'25"	180	112°52'29"	39°28'37"
75	112°44'10"	39°24'24"	181	112°52'29"	39°28'46"
76	112°44'3"	39°24'19"	182	112°52'26"	39°28'51"
77	112°43'57"	39°24'11"	183	112°52'23"	39°28'52"
78	112°43'57"	39°24'5"	184	112°52'22"	39°28'56"
79	112°44'0"	39°24'4"	185	112°52'23"	39°29'2"
80	112°43'59"	39°23'55"	186	112°52'21"	39°29'8"
81	112°43'57"	39°23'53"	187	112°52'24"	39°29'13"
82	112°43'47"	39°23'51"	188	112°52'14"	39°29'18"
83	112°43'49"	39°23'47"	189	112°52'9"	39°29'26"
84	112°44'2"	39°23'48"	190	112°52'9"	39°29'28"
85	112°44'6"	39°23'54"	191	112°52'13"	39°29'36"
86	112°44'7"	39°23'59"	192	112°52'17"	39°29'42"
87	112°44'4"	39°24'16"	193	112°52'23"	39°29'45"
88	112°44'12"	39°24'19"	194	112°52'29"	39°29'50"
89	112°44'16"	39°24'22"	195	112°52'29"	39°29'53"
90	112°44'23"	39°24'26"	196	112°52'39"	39°29'58"
91	112°44'31"	39°24'26"	197	112°52'45"	39°30'0"
92	112°44'45"	39°24'26"	198	112°52'58"	39°29'58"
93	112°44'48"	39°24'30"	199	112°53'3"	39°29'58"
94	112°44'47"	39°24'35"	200	112°53'22"	39°29'51"
95	112°44'44"	39°24'36"	201	112°53'29"	39°29'46"
96	112°44'48"	39°24'49"	202	112°53'35"	39°29'40"
97	112°44'54"	39°24'54"	203	112°53'44"	39°29'37"

