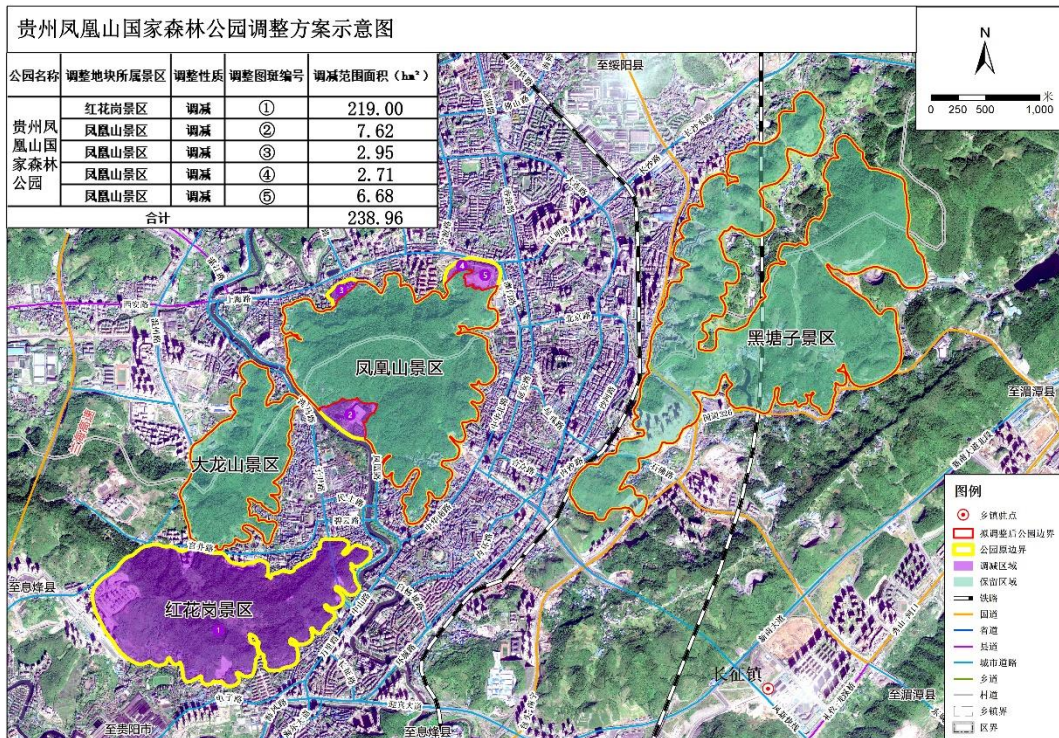


# 贵州凤凰山国家森林公园

## 一、贵州凤凰山国家森林公园所在地理位置

贵州凤凰山国家森林公园位于遵义市中心城区核心位置，涉及遵义市红花岗区、汇川区，森林公园总面积 1061.77 公顷，主要由分布在湘江河两岸的凤凰山景区、大龙山景区、红花岗景区和黑塘子生态培育区组成，地理坐标介于东经  $106^{\circ} 53' 40.47''$  —  $106^{\circ} 58' 19.51''$  ，北纬  $27^{\circ} 40' 31.02''$  —  $27^{\circ} 43' 29.89''$  之间，环绕在举世闻名的“遵义会议会址”周围，其地理位置优越，旅游交通便捷，是典型的都市型国家森林公园。

## 二、贵州凤凰山国家森林公园调整方案示意图



## 三、贵州凤凰山国家森林公园调整后范围拐点坐标

## 1、大龙山景区范围拐点坐标

拐点序号	东经	北纬
1	106°54'38.38"	27°41'54.92"
2	106°54'42.93"	27°41'55.97"
3	106°54'45.91"	27°41'58.3"
4	106°54'50.19"	27°41'55.55"
5	106°54'45.61"	27°41'43.47"
6	106°54'40.84"	27°41'32.06"
7	106°54'43.13"	27°41'29.21"
8	106°54'42.45"	27°41'28.29"
9	106°54'40.04"	27°41'28.17"
10	106°54'42.45"	27°41'26.29"
11	106°54'42.83"	27°41'23.68"
12	106°54'40.84"	27°41'22.83"
13	106°54'36.75"	27°41'25.84"
14	106°54'32.33"	27°41'26.81"
15	106°54'33.2"	27°41'25.43"
16	106°54'32.61"	27°41'24.15"
17	106°54'33.13"	27°41'22.03"
18	106°54'35.52"	27°41'22.07"
19	106°54'35.92"	27°41'20.56"
20	106°54'41.98"	27°41'19.77"
21	106°54'39.04"	27°41'13.71"

22	106°54'37.43"	27°41'16.33"
23	106°54'30.83"	27°41'18.78"
24	106°54'33.47"	27°41'15.76"
25	106°54'31.1"	27°41'14.17"
26	106°54'28.31"	27°41'15"
27	106°54'26.25"	27°41'12.93"
28	106°54'22.91"	27°41'11.69"
29	106°54'22.15"	27°41'12.98"
30	106°54'19.43"	27°41'12.25"
31	106°54'13.51"	27°41'15.04"
32	106°54'9.58"	27°41'28.27"
33	106°54'13.78"	27°41'35.83"
34	106°54'13.43"	27°41'42.15"
35	106°54'28.04"	27°41'53.03"
36	106°54'26.5"	27°41'56.96"
37	106°54'29.47"	27°41'57.79"
38	106°54'29.64"	27°42'0.27"
39	106°54'31.14"	27°42'2.02"
40	106°54'29.24"	27°42'5.68"
41	106°54'33.46"	27°42'7.99"
42	106°54'38.61"	27°42'5.94"
43	106°54'40.55"	27°42'1.18"

## 2、凤凰山景区范围拐点坐标

拐点序号	东经	北纬
44	106°55'45.22"	27°42'30.87"
45	106°55'47.54"	27°42'31.23"
46	106°55'47.54"	27°42'31.23"
47	106°55'47.22"	27°42'30.64"
48	106°55'47.22"	27°42'30.64"
49	106°55'47.22"	27°42'30.64"
50	106°55'48.52"	27°42'30.24"
51	106°55'49.44"	27°42'30.56"
52	106°55'50.27"	27°42'29.81"
53	106°55'55.59"	27°42'31.28"
54	106°55'52.33"	27°42'24.78"
55	106°55'55.74"	27°42'21.92"
56	106°55'51.8"	27°42'18.31"
57	106°55'45.76"	27°42'18.06"
58	106°55'42.62"	27°42'19.11"
59	106°55'43.3"	27°42'17.8"
60	106°55'42.05"	27°42'16.95"
61	106°55'46.18"	27°42'17.36"
62	106°55'52.24"	27°42'14.85"
63	106°55'55.27"	27°42'5.68"
64	106°55'49.39"	27°42'2.86"
65	106°55'48.78"	27°42'1.76"
66	106°55'46.89"	27°42'1.72"
67	106°55'51.1"	27°41'57.68"
68	106°55'46.99"	27°41'56.51"
69	106°55'49.13"	27°41'51.02"
70	106°55'44.02"	27°41'50.28"
71	106°55'44.41"	27°41'44.83"
72	106°55'39.99"	27°41'46.14"
73	106°55'42.76"	27°41'40.36"
74	106°55'37.27"	27°41'38.09"
75	106°55'40.91"	27°41'34.91"
76	106°55'37.22"	27°41'27.74"
77	106°55'32.92"	27°41'29.5"
78	106°55'31.9"	27°41'25.37"
79	106°55'27.44"	27°41'19.92"
80	106°55'25.42"	27°41'25.16"
81	106°55'24.25"	27°41'27.83"

82	106°55'27.01"	27°41'28.67"
83	106°55'29.27"	27°41'36.21"
84	106°55'22.62"	27°41'31.01"
85	106°55'20.77"	27°41'35.21"
86	106°55'18.52"	27°41'34.01"
87	106°55'17.5"	27°41'37.32"
88	106°55'19.93"	27°41'40.27"
89	106°55'17.83"	27°41'39.04"
90	106°55'16.85"	27°41'36.45"
91	106°55'15.42"	27°41'35.15"
92	106°55'14.13"	27°41'42.44"
93	106°55'11.44"	27°41'45.11"
94	106°55'4.92"	27°41'47.04"
95	106°54'59.49"	27°41'50.67"
96	106°54'57.3"	27°41'52.31"
97	106°54'46.9"	27°42'3.03"
98	106°54'45.3"	27°42'5.66"
99	106°54'45.97"	27°42'8.65"
100	106°54'44.48"	27°42'15.13"
101	106°54'49.79"	27°42'14.63"
102	106°54'49.79"	27°42'14.63"
103	106°54'48.45"	27°42'16.11"
104	106°54'46.06"	27°42'16.85"
105	106°54'44.8"	27°42'16.37"
106	106°54'43.32"	27°42'18.1"
107	106°54'44.33"	27°42'21.66"
108	106°54'43.66"	27°42'24.33"
109	106°54'46.58"	27°42'25.1"
110	106°54'52.12"	27°42'26.71"
111	106°54'55.65"	27°42'23.18"
112	106°55'1.17"	27°42'24.86"
113	106°55'1.82"	27°42'26.63"
114	106°55'8.61"	27°42'32.05"
115	106°55'11.66"	27°42'32.01"
116	106°55'16.53"	27°42'28.8"
117	106°55'17.95"	27°42'31.5"
118	106°55'17.9"	27°42'33.83"
119	106°55'22.52"	27°42'34.08"
120	106°55'22.94"	27°42'30.93"

拐点序号	东经	北纬
121	106°55'26.73"	27°42'30.19"
122	106°55'28.14"	27°42'26.1"
123	106°55'33.78"	27°42'29.45"
124	106°55'37.37"	27°42'27.37"
125	106°55'38.86"	27°42'28.98"
126	106°55'37.86"	27°42'31.78"
127	106°55'42.91"	27°42'35.64"
128	106°55'47.17"	27°42'35.58"
129	106°55'47.17"	27°42'35.58"
130	106°55'44.81"	27°42'34.7"
131	106°55'44.12"	27°42'33.47"
132	106°55'44.63"	27°42'33.43"
133	106°55'8.07"	27°41'56.91"
134	106°55'7.17"	27°41'57.04"

135	106°55'4.35"	27°41'54.74"
136	106°55'3.29"	27°41'53.54"
137	106°54'58.9"	27°41'54.35"
138	106°54'58.9"	27°41'54.34"
139	106°54'57.71"	27°41'52.73"
140	106°55'1.83"	27°41'49.62"
141	106°55'4.15"	27°41'48.15"
142	106°55'11.47"	27°41'45.27"
143	106°55'11.53"	27°41'48.6"
144	106°55'11.53"	27°41'48.6"
145	106°55'10.34"	27°41'50.85"
146	106°55'12.5"	27°41'53.27"
147	106°55'8.79"	27°41'55.92"
148	106°55'9.39"	27°41'56.51"
149	106°55'8.79"	27°41'57.44"

### 3、黑塘子景区范围拐点坐标

拐点序号	东经	北纬
150	106°57'43.4"	27°43'19.68"
151	106°57'44.59"	27°43'17.72"
152	106°57'41.36"	27°43'11.25"
153	106°57'32.59"	27°43'12.84"
154	106°57'33.11"	27°43'7.3"
155	106°57'23.25"	27°43'0.35"
156	106°57'27.91"	27°42'52.6"
157	106°57'24.9"	27°42'47.28"
158	106°57'13.9"	27°42'49.58"
159	106°57'9.79"	27°42'45.99"
160	106°57'12.38"	27°42'39.49"
161	106°57'15.29"	27°42'38.6"
162	106°57'15.32"	27°42'32.67"
163	106°57'12.22"	27°42'32.89"
164	106°57'12.28"	27°42'29.61"
165	106°57'10.36"	27°42'28.45"
166	106°57'11.04"	27°42'22.76"
167	106°57'7.58"	27°42'23.07"
168	106°57'4.37"	27°42'20.27"
169	106°57'6.17"	27°42'16.81"
170	106°57'3.27"	27°42'13.18"
171	106°57'7.56"	27°42'12.49"
172	106°57'9.95"	27°42'19.03"
173	106°57'18.87"	27°42'20"
174	106°57'25.55"	27°42'28.69"
175	106°57'26.09"	27°42'36.12"
176	106°57'28.69"	27°42'38.65"
177	106°57'30.83"	27°42'38.37"
178	106°57'31.96"	27°42'38.95"
179	106°57'29.91"	27°42'39.85"
180	106°57'30.97"	27°42'44.15"
181	106°57'35.5"	27°42'44.03"
182	106°57'37.4"	27°42'44.69"
183	106°57'38.5"	27°42'44.17"
184	106°57'39.49"	27°42'44.86"
185	106°57'39.17"	27°42'45.78"
186	106°57'39.92"	27°42'50.78"
187	106°57'43.42"	27°42'51.89"

188	106°57'45.45"	27°42'58.26"
189	106°57'47.01"	27°42'59.08"
190	106°57'46.19"	27°43'2.43"
191	106°57'44.55"	27°43'4.96"
192	106°57'47.03"	27°43'9.98"
193	106°57'49.55"	27°43'10.35"
194	106°57'48.32"	27°43'12.51"
195	106°57'48.68"	27°43'15.26"
196	106°57'52.14"	27°43'16.73"
197	106°57'57.7"	27°43'11.97"
198	106°57'57.69"	27°43'10.35"
199	106°57'59.92"	27°43'7.21"
200	106°58'11.45"	27°43'3.85"
201	106°58'13.02"	27°42'47.74"
202	106°58'18.27"	27°42'40.73"
203	106°58'19.5"	27°42'35.66"
204	106°58'18.55"	27°42'32.72"
205	106°58'13.26"	27°42'31.55"
206	106°58'9.59"	27°42'35.45"
207	106°58'1.65"	27°42'37.78"
208	106°57'53"	27°42'35.55"
209	106°57'46.06"	27°42'38.4"
210	106°58'4.19"	27°42'23.7"
211	106°58'5.72"	27°42'25.16"
212	106°58'9.15"	27°42'24.49"
213	106°58'11.06"	27°42'10.82"
214	106°58'7.97"	27°42'5.87"
215	106°57'57.78"	27°42'2"
216	106°57'55.46"	27°42'2.67"
217	106°57'53.44"	27°42'5.55"
218	106°57'52.42"	27°42'7.11"
219	106°57'51.8"	27°42'8.59"
220	106°57'51.09"	27°42'7.49"
221	106°57'49.91"	27°42'6.83"
222	106°57'52.45"	27°42'6.04"
223	106°57'52.82"	27°42'3.86"
224	106°57'51.83"	27°42'2.44"
225	106°57'50.14"	27°42'2.58"
226	106°57'49.15"	27°42'3.03"

拐点序号	东经	北纬
227	106°57'49.27"	27°42'2.2"
228	106°57'48.9"	27°42'1.13"
229	106°57'49.27"	27°42'0.46"
230	106°57'48.6"	27°41'58.52"
231	106°57'46.68"	27°41'53.82"
232	106°57'44.71"	27°41'53.94"
233	106°57'43.81"	27°41'55.39"
234	106°57'41.63"	27°41'56.45"
235	106°57'40.87"	27°41'58.26"
236	106°57'41.82"	27°42'0.13"
237	106°57'40.65"	27°41'59.38"
238	106°57'39.21"	27°41'59.55"
239	106°57'39.93"	27°41'58.49"
240	106°57'39.71"	27°41'57.15"
241	106°57'38.21"	27°41'56.65"
242	106°57'37.01"	27°41'55.83"
243	106°57'35.74"	27°41'57.5"
244	106°57'35.02"	27°41'56.76"
245	106°57'31.81"	27°41'56.46"
246	106°57'29.8"	27°41'57.66"
247	106°57'29.87"	27°42'1.55"
248	106°57'26.03"	27°41'53.93"
249	106°57'15.93"	27°41'55.35"
250	106°57'12.62"	27°42'0.3"
251	106°57'14.61"	27°42'2.34"
252	106°57'12.39"	27°42'5.44"
253	106°57'11.23"	27°42'4.83"
254	106°57'8.61"	27°41'59.16"
255	106°57'1.32"	27°41'59.89"
256	106°57'4.06"	27°41'55.16"
257	106°57'2.39"	27°41'51.14"
258	106°56'58.14"	27°41'48.91"
259	106°56'56.04"	27°41'45.37"
260	106°56'51.21"	27°41'44.84"
261	106°56'50.04"	27°41'42.26"
262	106°56'43.33"	27°41'39.95"
263	106°56'43.57"	27°41'37.15"
264	106°56'42.23"	27°41'35.81"
265	106°56'40.13"	27°41'35.85"
266	106°56'36.95"	27°41'30.68"
267	106°56'40.79"	27°41'31.74"
268	106°56'42.59"	27°41'29.11"

269	106°56'45.89"	27°41'28.29"
270	106°56'46.26"	27°41'26.81"
271	106°56'44.11"	27°41'22.95"
272	106°56'42.42"	27°41'22.97"
273	106°56'40.2"	27°41'25.28"
274	106°56'34.03"	27°41'24.66"
275	106°56'30.7"	27°41'21.67"
276	106°56'28.49"	27°41'23.54"
277	106°56'23.6"	27°41'24.68"
278	106°56'20.29"	27°41'30.16"
279	106°56'29.45"	27°41'38.17"
280	106°56'35.63"	27°41'41.7"
281	106°56'38.37"	27°41'45.77"
282	106°56'45.04"	27°41'47.11"
283	106°56'44.83"	27°41'48.64"
284	106°56'42.8"	27°41'48.64"
285	106°56'41.18"	27°41'50.35"
286	106°56'43.15"	27°41'52.43"
287	106°56'41.75"	27°41'54.84"
288	106°56'46.75"	27°42'5.6"
289	106°56'45.9"	27°42'7.33"
290	106°56'48.75"	27°42'19.1"
291	106°56'50.71"	27°42'20.48"
292	106°56'49.46"	27°42'21.83"
293	106°56'53.77"	27°42'32.65"
294	106°56'57.21"	27°42'33.56"
295	106°56'57.11"	27°42'36.49"
296	106°56'59.71"	27°42'37.91"
297	106°56'54.3"	27°42'41.41"
298	106°56'57.87"	27°42'46"
299	106°56'56.4"	27°42'48.24"
300	106°56'59.89"	27°42'51.46"
301	106°56'59.27"	27°42'53.73"
302	106°57'0.63"	27°42'55.83"
303	106°57'4.18"	27°42'55.36"
304	106°57'4.39"	27°43'2.48"
305	106°57'11.54"	27°43'4.84"
306	106°57'12.19"	27°43'4.09"
307	106°57'12.35"	27°43'1.77"
308	106°57'13.66"	27°43'2.72"
309	106°57'15.85"	27°43'2.94"
310	106°57'15.19"	27°43'4.3"
311	106°57'12.39"	27°43'5.14"

拐点序号	东经	北纬
312	106°57'13.11"	27°43'11"
313	106°57'20.91"	27°43'14.51"
314	106°57'24.75"	27°43'14.34"
315	106°57'29.56"	27°43'17.6"
316	106°57'29.54"	27°43'22.79"

317	106°57'31.13"	27°43'24.09"
318	106°57'34.55"	27°43'24.01"
319	106°57'34.55"	27°43'24.01"
320	106°57'34.51"	27°43'27.75"
321	106°57'38.85"	27°43'29.89"
322	106°57'44.36"	27°43'25.25"