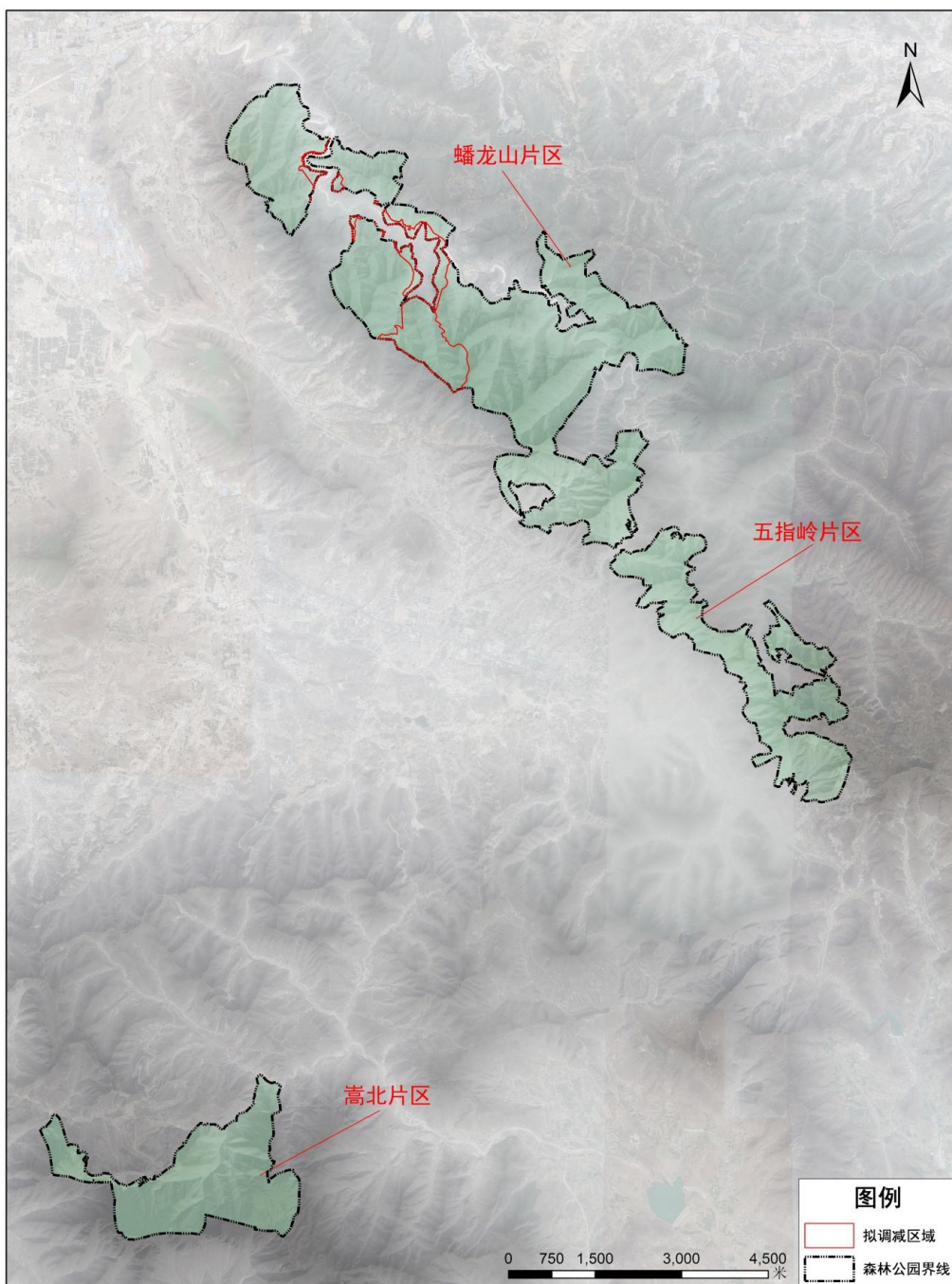


河南嵩顶国家森林公园

一、国家级森林公园所在地理位置

河南嵩顶国家森林公园位于嵩山北麓，巩义市东南部山区，国有巩义林场范围内，地理坐标为北纬 $34^{\circ} 31' 09'' \sim 34^{\circ} 41' 58''$ ，东经 $112^{\circ} 58' 57'' \sim 113^{\circ} 09' 06''$ 。东望荥阳市、新密市，南邻登封市，北部和西部与巩义市大峪沟镇、夹津口镇、北山口镇和涉村镇毗邻。

二、国家级森林公园调整方案示意图



审图号：豫巩（2024）01号

三、国家级森林公园调整后范围拐点坐标

拟调整范围后森林公园边界拐点坐标表

序号	X坐标 (m)	Y坐标 (m)	序号	X坐标 (m)	Y坐标 (m)	序号	X坐标 (m)	Y坐标 (m)
1	38411059.07	3839077.71	52	38413217.33	3839537.84	103	38415503.20	3833922.55
2	38410630.44	3839480.93	53	38413118.21	3839594.10	104	38415817.35	3834053.46
3	38410593.93	3839628.57	54	38412880.68	3839612.85	105	38416187.92	3834103.20
4	38410735.22	3839680.96	55	38412870.38	3839604.98	106	38416214.08	3833916.56
5	38410279.60	3839944.48	56	38412784.35	3839620.90	107	38416121.17	3833731.46
6	38410257.38	3840293.73	57	38412974.44	3839950.39	108	38416654.97	3833662.01
7	38409960.51	3840403.27	58	38412825.35	3840063.52	109	38416962.99	3833866.89
8	38410601.46	3841466.83	59	38412962.10	3840095.04	110	38416850.11	3834081.22
9	38411201.54	3841667.85	60	38412939.96	3840242.00	111	38416889.78	3834154.51
10	38411343.23	3841268.46	61	38413060.91	3840424.68	112	38416995.12	3833924.34
11	38411251.15	3840989.06	62	38413018.15	3840490.13	113	38416889.80	3834537.65
12	38411713.39	3840743.80	63	38412707.12	3840506.56	114	38417036.88	3834839.81
13	38411627.39	3840519.16	64	38412443.18	3840421.34	115	38417170.70	3834963.33
14	38411250.42	3840279.56	65	38412247.36	3840532.55	116	38416981.67	3835115.63
15	38411234.51	3840211.61	66	38412043.32	3840581.07	117	38417233.83	3835499.51
16	38411438.41	3839931.66	67	38411921.08	3840619.17	118	38417066.10	3835704.17
17	38411298.78	3839495.22	68	38411884.57	3840703.31	119	38416708.77	3835654.92
18	38411829.00	3840793.80	69	38412196.35	3839385.43	120	38416688.69	3835414.74
19	38411754.39	3840496.93	70	38412143.36	3838964.11	121	38416483.48	3835228.24
20	38411332.12	3840423.91	71	38412030.62	3838807.83	122	38416661.27	3835164.22
21	38411884.57	3840204.83	72	38411903.62	3838587.17	123	38416515.10	3835067.56
22	38411906.09	3839976.46	73	38411717.88	3838436.36	124	38416118.24	3835111.09
23	38412173.49	3839804.78	74	38411970.29	3837818.82	125	38415608.69	3835314.19
24	38412503.69	3839766.68	75	38412057.74	3837834.51	126	38415588.42	3835556.49
25	38412557.10	3839669.00	76	38412214.18	3837635.13	127	38416297.34	3836786.46
26	38412551.21	3839618.46	77	38412414.93	3837395.42	128	38416398.38	3836748.22
27	38412587.83	3839614.28	78	38412540.19	3837293.75	129	38416462.35	3836884.90
28	38412605.29	3839587.30	79	38412869.61	3837393.02	130	38416724.91	3836811.85
29	38412749.76	3839634.92	80	38412979.71	3837484.43	131	38416982.70	3837031.59
30	38412671.79	3839524.55	81	38412963.63	3837786.39	132	38417034.95	3836748.05
31	38412697.23	3839505.02	82	38413061.02	3838066.71	133	38417663.95	3836651.79
32	38412958.11	3839352.52	83	38412830.20	3838971.02	134	38417837.10	3836707.71
33	38412978.56	3839337.64	84	38412611.64	3839007.86	135	38417910.12	3837176.04
34	38413105.35	3839245.31	85	38412552.91	3839169.78	136	38417837.75	3837215.48
35	38413116.51	3839237.19	86	38412389.39	3839330.12	137	38417806.41	3837298.72
36	38413093.42	3839165.07	87	38413769.73	3838677.20	138	38417752.83	3837286.44
37	38413119.17	3839197.42	88	38413661.85	3838150.62	139	38417717.12	3837440.48
38	38413151.24	3839208.60	89	38413529.20	3837757.05	140	38417655.72	3837437.13
39	38413177.43	3839178.45	90	38413868.29	3837150.27	141	38417360.07	3837905.18
40	38413297.52	3839319.41	91	38413998.03	3836460.16	142	38417031.76	3837836.73
41	38413355.20	3839302.63	92	38414228.73	3836105.79	143	38416882.08	3837809.95
42	38413377.89	3839306.79	93	38415203.07	3835379.12	144	38416323.20	3838439.52
43	38413445.59	3839230.46	94	38415130.58	3835241.74	145	38416145.38	3838371.62
44	38413512.88	3839120.76	95	38415025.86	3834233.88	146	38416140.76	3838582.01
45	38413670.67	3839022.95	96	38414834.61	3834838.07	147	38416301.65	3838738.63
46	38413729.45	3838954.17	97	38415406.07	3834782.22	148	38416265.93	3838819.89
47	38413716.30	3838876.44	98	38415480.01	3834448.78	149	38415733.72	3838653.80
48	38413746.70	3838899.92	99	38415395.48	3834336.24	150	38415624.78	3838749.35
49	38413869.20	3839168.15	100	38415063.59	3834278.33	151	38415474.76	3838876.15
50	38413883.48	3839208.34	101	38414984.89	3834115.72	152	38415413.14	3839142.26
51	38413207.51	3839488.73	102	38415348.48	3834038.00	153	38415305.09	3838992.24

序号	X坐标 (m)	Y坐标 (m)	序号	X坐标 (m)	Y坐标 (m)	序号	X坐标 (m)	Y坐标 (m)
154	38415370.28	3838743.10	205	38419495.36	3829533.47	256	38419142.82	3831642.74
155	38415434.57	3838636.84	206	38419673.78	3829681.56	257	38419200.56	3831713.29
156	38415403.32	3838174.28	207	38419670.17	3829555.96	258	38419046.06	3832093.83
157	38415476.09	3838207.15	208	38419752.08	3829758.02	259	38418948.82	3832141.35
158	38415438.50	3838145.34	209	38419782.39	3829610.46	260	38419018.84	3832323.66
159	38415496.17	3838137.49	210	38419707.32	3829453.94	261	38418738.15	3832220.94
160	38415560.91	3838010.24	211	38419744.54	3829414.44	262	38418408.42	3832254.92
161	38415835.50	3837923.18	212	38419965.22	3829632.41	263	38418261.43	3832678.56
162	38415966.19	3837892.66	213	38419883.22	3829303.15	264	38418143.97	3832722.01
163	38415844.58	3837671.13	214	38420237.53	3829265.82	265	38417983.35	3832731.49
164	38416071.63	3837808.01	215	38420502.26	3829339.21	266	38418013.48	3833033.61
165	38416262.04	3837648.49	216	38420760.09	3830018.06	267	38417900.51	3833223.71
166	38416309.33	3837579.55	217	38420639.96	3830243.61	268	38418039.71	3833322.92
167	38416037.80	3837485.38	218	38420131.90	3830457.20	269	38417860.43	3833384.66
168	38415682.00	3837687.01	219	38419622.38	3830424.21	270	38418197.42	3833619.24
169	38415726.56	3837753.40	220	38419567.02	3830537.43	271	38418203.14	3833841.88
170	38415646.80	3837905.72	221	38419698.86	3830755.64	272	38417872.42	3833897.53
171	38415548.28	3837854.46	222	38420026.72	3830685.93	273	38417849.04	3833798.47
172	38415439.80	3838064.41	223	38420211.97	3830699.17	274	38417789.83	3833825.39
173	38415047.92	3838107.30	224	38420230.16	3830800.44	275	38417741.38	3833914.35
174	38414931.83	3838297.51	225	38420368.34	3830617.63	276	38417647.65	3833843.14
175	38414896.01	3838154.33	226	38420481.82	3830652.32	277	38417744.21	3833930.70
176	38414827.35	3838161.71	227	38420506.39	3831043.86	278	38417763.16	3834014.70
177	38414855.04	3837979.61	228	38420285.66	3831480.28	279	38417522.31	3833972.55
178	38414536.25	3837900.13	229	38420227.88	3831558.95	280	38417284.87	3833719.20
179	38414191.03	3838219.14	230	38420484.57	3831731.57	281	38417195.86	3833619.35
180	38416763.82	3833625.16	231	38420327.71	3831948.51	282	38417111.23	3833617.17
181	38416659.22	3833465.02	232	38419944.61	3832017.76	283	38416924.32	3833572.23
182	38416573.48	3833346.60	233	38419784.38	3832158.77	284	38406697.26	3823606.76
183	38416722.13	3833182.74	234	38419324.12	3832755.00	285	38406934.21	3823862.29
184	38417143.00	3833130.92	235	38419242.79	3832705.75	286	38407191.97	3823329.25
185	38417296.56	3833013.69	236	38419242.92	3832670.51	287	38407367.80	3823323.09
186	38417031.12	3832672.55	237	38419499.02	3832317.59	288	38407358.94	3823195.37
187	38417541.36	3832743.10	238	38419341.60	3832316.41	289	38407498.78	3823202.39
188	38417497.40	3832516.89	239	38419339.25	3832197.86	290	38407465.95	3823062.48
189	38417668.18	3832113.31	240	38419300.41	3831958.24	291	38407525.77	3823118.18
190	38417935.01	3832107.15	241	38419382.22	3831786.69	292	38407490.05	3823030.53
191	38418030.10	3831911.43	242	38419473.09	3831682.98	293	38407478.25	3822881.94
192	38418471.88	3831812.55	243	38419468.40	3831801.74	294	38407532.00	3822870.50
193	38418571.04	3831543.48	244	38419431.03	3831927.35	295	38407594.98	3822805.22
194	38418843.32	3831420.18	245	38419586.92	3831916.83	296	38407924.92	3822835.08
195	38418931.08	3831278.26	246	38419705.15	3831785.30	297	38408139.45	3822663.44
196	38418953.08	3830997.19	247	38419604.28	3831710.79	298	38408205.90	3822628.92
197	38418983.74	3830647.11	248	38420060.83	3831542.17	299	38408523.90	3822781.14
198	38419166.04	3830321.09	249	38420306.47	3831390.40	300	38408539.90	3822749.18
199	38419357.11	3830141.05	250	38420072.99	3831306.22	301	38408426.17	3822630.99
200	38419024.35	3830020.24	251	38419870.40	3831232.78	302	38408622.67	3822755.29
201	38419113.24	3829880.86	252	38419734.33	3831226.56	303	38408689.74	3822747.57
202	38419464.35	3830067.04	253	38419733.54	3831120.88	304	38408727.84	3822776.52
203	38419531.94	3830044.73	254	38419424.51	3831115.98	305	38409018.80	3822989.50
204	38419414.30	3829624.67	255	38419377.62	3831474.42	306	38409182.28	3823371.64

序号	X坐标 (m)	Y坐标 (m)	序号	X坐标 (m)	Y坐标 (m)	序号	X坐标 (m)	Y坐标 (m)
307	38409490.82	3823716.77	319	38410760.87	3823052.18	331	38409453.64	3821792.77
308	38409546.78	3823672.15	320	38410707.96	3822904.01	332	38408345.60	3821699.09
309	38409869.57	3823595.26	321	38410634.33	3822859.38	333	38408181.92	3821743.98
310	38410100.73	3823755.36	322	38410661.64	3822691.80	334	38408066.84	3821818.37
311	38410410.29	3824062.27	323	38411084.34	3822902.08	335	38407995.88	3822387.09
312	38410494.85	3824544.34	324	38411191.58	3822734.43	336	38407929.43	3822697.63
313	38410698.63	3824409.41	325	38411173.52	3822189.55	337	38407664.17	3822684.98
314	38410867.96	3824351.20	326	38411047.08	3821897.54	338	38407622.60	3822722.77
315	38410862.67	3823917.28	327	38410914.62	3821753.05	339	38407600.70	3822683.02
316	38410743.61	3823877.60	328	38410746.18	3821862.44	340	38407400.10	3822710.56
317	38410738.31	3823486.01	329	38410419.26	3821876.22	341	38407215.54	3822785.74
318	38410685.40	3823250.53	330	38409570.44	3822128.68	342	38406921.03	3822819.58